



Floor Coating Systems

Industrial floor systems to suit any requirement

EXPERTISE
FLOOR COATINGS



Floor Coating Systems from MC

A floor is the part of a building that is used the most. The demands on a floor are as varied as the industrial and commercial uses of a building. To ensure the lasting protection of a floor, its coating system has to be matched to suit its particular requirements.

The individual adjustment of the functions and characteristics of a floor coating system provides the solution for any type of use. Furthermore, there is a clear trend towards attractive flooring designs without loss of technical performance. The rising demands and requirements for highly representative areas attributed to the Corporate-Identity-Concept make highly decorative, variable and aesthetic flooring systems a necessity. In addition, environmental and health aspects are of increasing concern in both planning and realisation of projects. It is also necessary to show evidence that product systems meet the European REACH standards.

This brochure intends to show you design possibilities and potential solutions for your sector and your particular requirements. However, the brochure is no substitute for an individual consultation. For this reason MC's specialist advisors are at your disposal from the planning stage right down to the actual execution of the works. We provide you with the highest technical support anywhere in the world and can look back on decades of experience as the technology leader in the area of floor coating systems.

Content



Chemical Industry Page 4



Metal-working Industry Page 5



Retail, Commerce, Service Sector Page 6



Electronics Industry / Automotive Industry / ESD Page 7



Pulp, Paper and Print Industry Page 8



Food Industry / Industrial Kitchens Page 9



Automobile Industry Page 10



Pharmaceuticals / Health Care Page 11



Deep Freeze Cold Stores Page 12



Multi-storey Car Parks Page 13



Facility and Real Estate Management Page 14



Service Spectrum Page 15



Chemical Industry

The chemical industry stands for complex applications and high specialisation. Extremely high quality and safety standards to protect people and environment are of utmost importance. In ultra-modern plants the raw materials for high value products are being produced. During the manufacturing process you are demanding the highest degree of cleanliness, safety and functionality.



Your requirements:

- Protecting the floor from aggressive chemicals
- Protection from mechanical loading
- Prevention of electrostatic charging and of risk of explosion
- Prevention of work accidents, slip resistant properties
- Attractive design in front-of-house areas open to the public

Our solution:

Especially the chemical resistance of **MC-DUR 1800** against a diverse range of substances – whether during day-to-day operations or in the event of an emergency – even in combination with high temperatures ensures the lasting protection of the floor. Additionally, the defined antistatic discharge capacity of the material allows the handling of critical substances risk-free. If cracked substrates have to be taken into consideration as well, or if use in an outside area is intended, then **MC-DUR 1900** meets all the vital requirements. Special demands on crack bridging ability satisfies our **MC-DUR 1900 plus**.

You are only able to discontinue operations for short intervals when you want to modernise, repair or make building alterations? With **MC-DUR rapid** you can realise complete surface coatings in just one day.

Where attractive designs are required in areas that are open to the public or where laboratories and operational areas need to be of superior quality, **MC-DuroDesign** provides a highly decorative design system, including for example the **MC-Durofloor**. Here aesthetics are coupled with outstanding technical characteristics.





Metal-working Industry

In today's metal-working industry it is obligatory for you to fulfil the highest quality standards. The vast product diversity for the many different application areas requires differentiated process flows. When deciding on the suitable industrial floor you are therefore confronted with a great number of different requirements, such as heavy duty rollers, the moving of iron-bar crates or falling work pieces. On top of this, floors are also potentially subjected to many different chemical loads.



Your requirements:

- Protecting the floor from wear-and-tear
- Protection from heavy blows and knocks
- Prevention of damage from aggressive chemicals
- Prevention of work accidents, slip resistant properties

Our solution:

The processes in manufacturing, assembly, electroplating and storage areas and the internal transport of heavy goods frequently go hand in hand with highly abrasive, rolling or knocking loads – in this case **MC-DUR 1200** is particularly well suited. Where electrostatic charging must be prevented or where a risk of explosion exists, **MC-DUR 1800** is used. For each project the desired slip-resistance can be adjusted.

You must keep operational down-times to a minimum when modernising, repairing or converting your structures? Complete coatings can be performed within one day with **MC-DUR rapid**.





Retail, Commerce and Service Sector

In the retail, commerce and service sector customer services are the priority. First-class goods and services need trouble-free processes. Quality products are moved using modern plant technology. A particularly pleasant, attractive and branded environment for customers to shop/visit is decisive for success.



Your requirements:

- Attractive floor design that aids sales promotion as part of a holistic design concept
- Physiological harmlessness of the substances used
- Reduction of cleaning costs and efforts
- Use of materials that meet fire protection requirements
- Prevention of accidents such as falls by the public

Our solution:

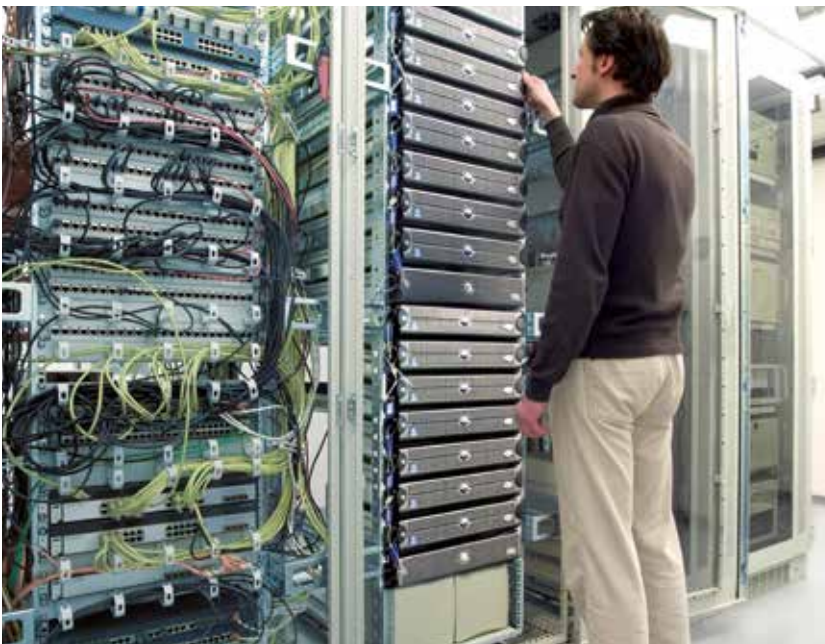
No compromise in terms of design and functionality. In areas that are heavily frequented by the public and which need to represent a corporate identity in an aesthetically pleasing and attractive way, such as foyers, reception areas, consultation and conference rooms, public buildings such as museums, nurseries, old peoples' homes, hospitals, but also in shops and showrooms of both retailers and wholesalers, **MC-DuroDesign** offers a wealth of different design options in terms of surface structure and coloration. **MC-Duroflake** meets the highest demands with its exciting surface. If time is of the essence, **MC-DUR SL** can be applied in just one day. Naturally, all **MC-DuroDesign systems** can be cleaned with very little effort, are flame resistant, physiologically harmless and can even be used in critical areas. For storage and distribution areas **MC-DUR 1200** offers a particularly robust solution with a long-service life.





Electronics / Automotive Industry / ESD

The modern electronics industry is characterised by a high degree of specialisation and ever shorter product life cycles. In such a dynamic environment especially, innovation, flexibility and most of all quality consciousness are vital. You are producing filigree electronic components in ultra-modern manufacturing plants. Here the utmost in cleanliness, purity, safety and functionality is vital.



Your requirements:

- ▣ Prevention of electrostatic charging
- ▣ EPAs for the protection of sensitive electronic devices
- ▣ Comprehensive service and technical advice
- ▣ Reduction of cleaning costs and efforts
- ▣ Protection of the floor from chemical and mechanical impacts

Our solution:

A defined, reliable and consistent antistatic discharge capacity of the floor is achieved with **MC-DUR 1800**. Particularly high requirements because of additional chemical loading or cracked substrates are reliably met by **MC-DUR 1900**. Increasingly “electrostatic protected areas” (EPAs) are built, especially where sensitive electronic parts are handled. In this area **MC-DUR 1850 ESD** fulfils the additional requirements in terms of system resistance and the Walking-test. This way employees’ are free to move around and latent damage to building elements are prevented.

We shall be glad to provide you with close project assistance and comprehensive services in these complex and sophisticated scenarios.





Pulp, Paper and Print Industry

Despite of the rise in digital media the pulp, paper and print industry is still of considerable importance for the dissemination of information. Printed material today is produced with the latest technology in production control. In order to ensure the trouble-free production process high standards in terms of quality and safety from pulp production right down to the finished print product coming off the printing press.



Your requirements:

- Protecting the floor from wear-and-tear
- Prevention of damage from aggressive chemicals
- Prevention of work accidents, anti-slip resistance

Our solution:

Does your floor suffer from heavy superimposed loads and plant traffic? Then choose the robust **MC-DUR 1212 VB** with an extra long service life to protect your floor. **MC-DUR 1800** and **MC-DUR 1900** have proven particularly successful in special areas of process plants which must additionally be protected from electrostatic charging.

If only very short down-times of operations are possible for modernisations, repair works or conversions, you can take advantage of **MC-DUR rapid**, which saves time as the floor is ready to be loaded again after just a day.





Food Industry and Industrial Kitchens

The food industry is characterised by the highest standards in terms of quality. Whether food production, large-scale industrial kitchens or canteens are concerned, temperate production with consistently high quality coupled with the highest requirements in terms of hygiene and cleanliness are essential.



Your requirements:

- ▣ Materials used must not impair food stuffs
- ▣ Permanent protection of the substrate even when loading combines high temperatures, organic substances and mechanical wear-and-tear
- ▣ Prevention of falls when areas get very wet
- ▣ Reduction of cleaning costs and efforts

Our solution:

For use in large kitchens and canteens **MC-Durofloor** is second to none! Convincing design combined with slip-proof, easy-to-clean and joint-free surfaces, plus uncritical and physiologically harmless when in contact with food, this reference system offers an enormous spectrum for your kitchen area.

If your floor is under particularly heavy stress in food production due to the use of organic substances or aggressive material mixtures, choose the hybrid screed system **MC-DUR 2500**. This floor can safely withstand high temperatures caused by working operations or very short cleaning intervals.

If only very short down-times of operations are possible for modernisations, repair works or conversions, you can take advantage of **MC-DUR rapid**, which saves time as the floor is ready to be loaded again after just a day.





Automobile Industry

Like hardly any other industry the automotive industry is synonymous with innovation, progress and mobility of contemporary society. Smooth production processes and ultra-modern plant technology guarantee first-class products. The positive image of your brand is the success factor on the international market. Quality and safety standards to protect people and environment are of utmost importance. When planning your industrial floors your demands are equally high.



Your requirements:

- Avoidance of surface flaws when using paints and varnishes
- Reduction of cleaning costs and efforts
- Attractive floor design that promotes sales

Our solution:

For floor areas that are put under particular stress, such as warehouses and loading bays, use our extremely hard-wearing flooring system **MC-DUR 1200**. Paint-spray lines and similar areas require the absolute silicone-free **MC-DUR 2052 AM** so as to reliably avoid surface impairments.

Should you want to create showrooms or office areas that look particularly attractive, **MC-DuroDesign** offers you a great range of options that combine good looks with excellent technical properties.





Pharmaceutical Industry / Health Care

The pharmaceutical industry stands for specialisation, quality consciousness and innovation. In your sector peoples' health and well-being are at the heart of operations. You are therefore demanding the highest degree in cleanliness, purity, safety and functionality.



Your requirements:

- ▣ Particularly minimal cleaning cost and effort, ease of disinfection and decontamination
- ▣ Guaranteeing a suitable clean-room atmosphere
- ▣ Protecting the floor from aggressive chemicals
- ▣ Prevention of electrostatic charging
- ▣ Attractive design of laboratory areas and in front-of-house areas open to the public

Our solution:

In highly critical areas in the production chain you require a flooring system which features optimal ease of decontamination, cleanability and disinfection, potentially also in combination with static discharge capability. Here nothing but **MC-Durofloor** will do. The great design freedom of this flooring system has also contributed to it becoming a long-standing favourite in the pharmaceutical industry.

If, however, the protection of the substrates from critical substances during production or in emergencies is your main concern, then **MC-DUR 1800** is the protection system for you.





Deep Freeze Cold Stores

Deep freeze cold stores pose a particular challenge in terms of logistics, quality control and operational safety. A safe, trouble-free and uninterrupted operational flow is essential for you. Frequently experienced damage to the floor, especially in the drive ways, increase the wear-and-tear on your transport systems, the risk of impact accidents and consequently the amount of accidents at work, too. Repairs in such areas are not infrequently purely makeshift for reasons of time pressures, for being too complex and the unpleasant acrylate smells.



Your requirements:

- ▣ Repairs at very low temperatures
- ▣ Goods must not be impaired/damaged by the repair measures
- ▣ No interruption to operations
- ▣ Protecting the floor from wear-and-tear

Our solution:

With **MC-DUR 3500 KH** a repair system is at hand that allows you to remove damaged spots, break-outs, worn lanes, damaged joints and tracks at very low temperatures quickly and permanently, and above all, without odour and without the need to interrupt operations. Costly housings and partial heating are a thing of the past. Floors that are in good order not only protect the goods, but also protect vehicles from excessive wear-and-tear. And last but not least, reducing the risk of accidents benefits your workers.





Multi-storey Car Parks

In multi-storey car parks the economical use of available parking space is the main concern. It is influenced primarily by the frequency of use, but also by parking lengths and maintenance costs. Penetrating chlorides, atomised spray, weather impact and of course, the traffic itself – especially in the areas of bends and ramps – require a reliable, proven and lasting floor coating concept that takes into consideration every detail.



Your requirements:

- ▣ Prevention of wear-and-tear from traffic load
- ▣ Protection from chlorides entering the substrate
- ▣ Visual design options
- ▣ Protection from the effects of weather

Our solution:

For almost all areas of a multi-storey car park **MC-DUR 1252** is recommended. The wear-resistance of the system is not only tried-and-tested in practice, but has also been certified in extensive trafficability tests conducted by external testing authorities. The impermeability of the floor coating system gives reinforced concrete structures lasting protection from chlorides. In areas subject to heavy use and wear, such as bends and ramps the system's layer thickness is increased. A further safety advantage is the fire protection category of the system, "low flammability". Together with innovative systems from the specialist areas concrete repair and injection technology, a complete and well-matched system that protects and preserves the value of your property is at your disposal.





Facility and Real Estate Management

You are developing, managing or letting real estates? In this field it is important to find solutions for a great number of vastly different areas and to combine individuality, pleasant living or working environments and cost-efficiency. Solutions for details are of special importance here, as is the technical reliability of the chosen materials – in particular where weather effects have an impact. Plus special environmental and health aspects (REACH Directive) must be taken into consideration.



Your requirements:

- Attractive design in front-of-house areas open to the public
- Low cleaning costs and efforts
- Prevention of falls, especially in outside areas
- Physiological harmlessness of substances used
- Use of materials that meet fire protection standards

Our solution:

For walkable areas **MC-DUR 2095 F** offers high-tech sealing that features outstanding ease-of-cleaning and UV stability. Lasting protection even for heavy use areas and a great range of colour designs offers **MC-Durofloor**. For exterior areas **MC-DUR 2052 UVB** impresses with its extreme colour stability against UV exposure, and is resistant to marked changes in temperatures.

In areas that are heavily frequented by the public and which need to make a visual impact and look highly attractive, such as foyers, reception areas, consultation and conference rooms or public buildings, **MC-DuroDesign** offers a wealth of different design options in terms of surface structure and coloration.





Service Spectrum

As specialist for floor coating systems with the highest degree in resistance capability and aesthetics MC offers more than industry-oriented system diversity: from the selection of a suitable system right down to on-site support our competent advisory service provides our partners with a maximum in planning reliability to ensure a problem-free project delivery. Reliable, practice-oriented and efficient.



- ▣ Advisory Service As Early As Planning Stage
 - ▣ Project inspection
 - ▣ Floor status analysis
 - ▣ Clarifying system requirements
 - ▣ Advising on the selection of suitable flooring systems
 - ▣ Working out solutions for details
 - ▣ Support in the selection of applicators
 - ▣ REACH Assessment
- ▣ Know-how Transfer
 - ▣ Training courses
 - ▣ Instructions
 - ▣ In-house seminars
 - ▣ International symposia
- ▣ Project Support
 - ▣ Preparing sample areas
 - ▣ Technical support
 - ▣ On-site support
 - ▣ Project inspection on completion



Industrial floor systems to suit any requirement

- Chemical Industry
- Metal-working Industry
- Retail, Commerce, Service Sector
- Electronics Industry / Automotive Industry / ESD
- Pulp, Paper and Print Industry
- Food Industry / Industrial Kitchens
- Automobile Industry
- Pharmaceuticals / Health Care
- Deep Freeze Cold Stores
- Multi-storey Car Parks
- Facility and Real Estate Management

MC-Bauchemie Müller GmbH & Co. KG
INFRASTRUCTURE, INDUSTRY & BUILDINGS
Am Kruppwald 1-8
46238 Bottrop, Germany

Phone: +49 2041 101-10
Fax: +49 2041 101-188

IN@mc-bauchemie.com
www.mc-bauchemie.com



BE SURE. BUILD SURE.

Contact details

